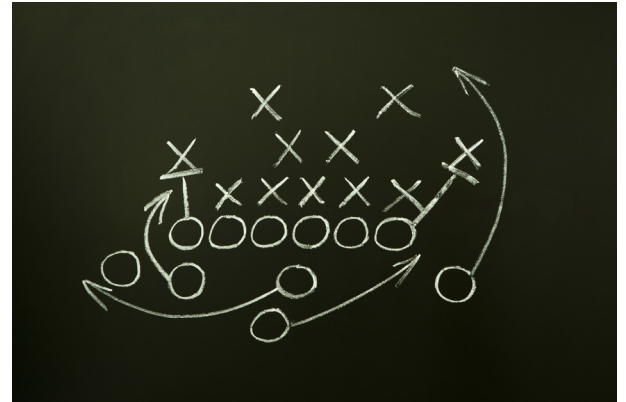


# A whole new workplace strategy

Real estate is typically the second largest expense for most organizations. Yet, its utilization often goes unmeasured. At a time when corporate real estate professionals are forced to do “more with less,” several concerns rise to the top of the priority list, including: reducing real estate costs, increasing staff without expansion, minimizing energy consumption, and repurposing existing space to meet the evolving needs of the modern workplace.

You need data you can count on to help drive these important decisions.



AsureSpace™ SmartView is a comprehensive workplace utilization analysis solution that empowers you to make educated, cost-effective decisions about your workspace. It uses state-of-the-art occupancy and presence detection devices with in-depth, interactive reporting dashboards to track, measure, and analyze space throughout your entire facility including individual workspaces.

## Capturing space utilization and analyzing occupancy trends

SmartView uses activity sensor technology to passively detect use and occupancy of meeting rooms and workstations. Because the sensors constantly record activity, maximum and minimum occupancy figures can be recorded for the whole building(s), floors, departments and conference rooms. This continuous monitoring helps manage real estate trends by providing reporting analysis in real time.

Once occupancy and space utilization data is collected, you will receive reporting in an easy-to-use dashboard format. From here you can see maximum and minimum occupancy, average utilization and trend information. You can then leverage this analysis to answer the types of questions that can have significant financial consequences, such as:

- Was the room or desk actually used?
- How long was it used?
- By how many people?
- Which employees may fit a telework model?
- What is the average occupancy of a particular meeting room?
- Which rooms/desks were used most frequently and why?

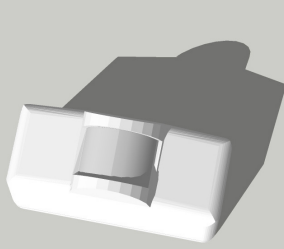
---

“ After analyzing how our satellite offices were being utilized, we were able to consolidate operations, which led to a 33% reduction in our real estate portfolio.”

*Facility director of a global insurance company*

---

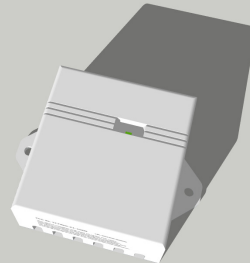




### Activity Sensors

SmartView activity sensors are wireless devices affixed to the underside of any desk, workstation, or related area.

The devices use infrared technology to capture movement and temperature which identifies if a space was used, for how long, and how frequently.



### Routers

SmartView routers create the mesh network that take the data from the sensors. They collate the information and transmit it to the data logger.



### Data loggers

SmartView data loggers look similar to a broadband router. They aggregate all information from the routers and transmit the data daily to the reporting portal.

## Key Benefits of the AsureSpace SmartView Solution

AsureSpace SmartView empowers you to uncover opportunities to cut real estate, energy, and other operational costs, resulting in an unprecedented ROI:

- Eliminate or sublease existing real estate including underutilized satellite offices
- Repurpose space to align with changing work environments
- Analyze performance of telework and related office hoteling programs
- Enhance or update less-desirable workspace
- Migrate from a fixed-space to cost-effective variable workspace model
- Add/remove expensive videoconferencing and telepresence equipment

For more information about AsureSpace SmartView solutions, contact us at [info@asuresoftware.com](mailto:info@asuresoftware.com) or 888.323.8835.

